

Cissy Strut

X

relevé H. M-2015

The Meters

$\text{♩} = 105$

Guitare électrique

Guitare électrique

Guitare basse

Batterie

4

Guit. El.

Guit. El.

Guit. B.

Batt.

6

Guit. El.

Guit. El.

Guit. B.

Batt.

8

Guit. El.

Guit. El.

Guit. B.

Batt.

B⁷ F

10

Guit. El.

Guit. El.

Guit. B.

Batt.

12

Guit. El.

Guit. El.

Guit. B.

Batt.

X

14

Guit. El.  14

Guit. El. 

Guit. B. 

Batt. 

16

Guit. El.  16

Guit. El. 

Guit. B. 

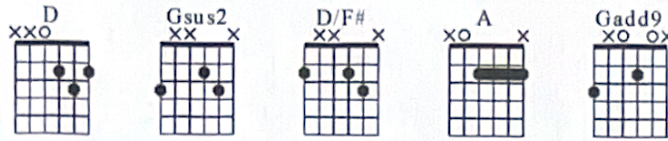
Batt. 

Detailed description: This image shows two systems of musical notation for a rock band. The first system covers measures 14 and 15, and the second system covers measures 16 and 17. Each system includes staves for Electric Guitar (El.), Bass Guitar (B.), and Drums (Batt.). The notation is in 4/4 time. In measure 14, the electric guitar plays a melodic line with eighth and sixteenth notes, while the bass guitar plays a rhythmic accompaniment. The drums play a simple pattern. In measure 16, the electric guitar continues its melodic line, and the bass guitar plays a similar accompaniment. The drums play a consistent pattern. The notation is clear and professional, with a key signature of one flat and a common time signature.

Free Fallin'

baseret på John Mayer live

Capo 3. bånd



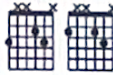
♩ = 80

Intro
Free time
D



Capo. fret 3

Gsus2 D/F#



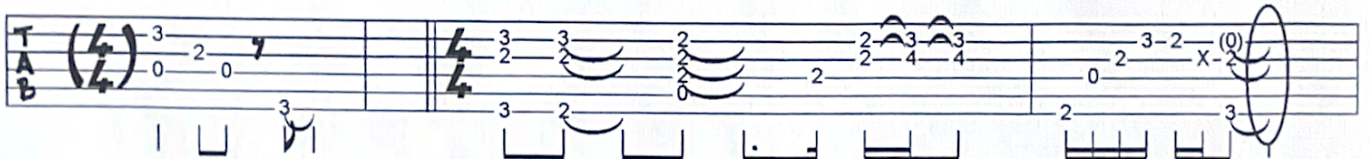
A



D/F#



Gadd9



Gsus2 D/F#



A



D/F#



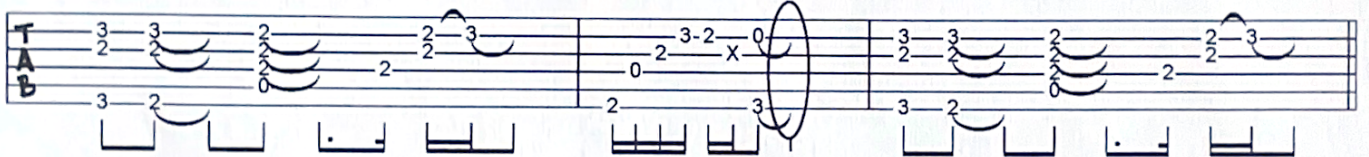
Gadd9



Gsus2 D/F#



A



A Vers

D/F#



Gadd9



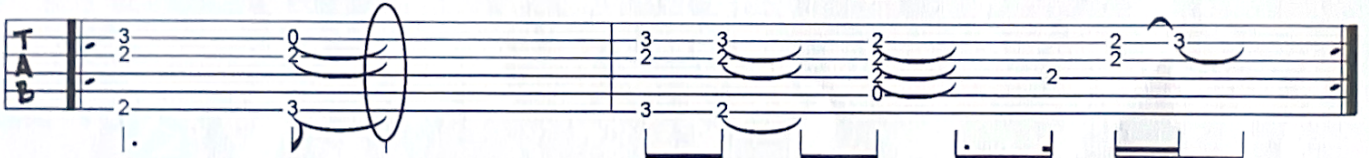
Gsus2



D/F#



A



Vers m. strum

A Vers

D/F#



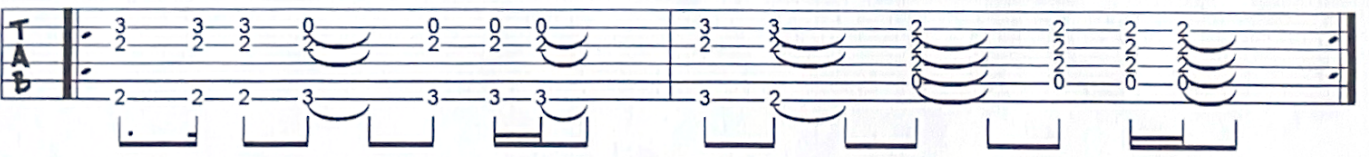
Gadd9



Gsus2 D/F#



A



13 F

14 B \flat

15 E \flat

T
A
B

16 B \flat

17 Gm

T
A
B

© Carsten Honeré
96

WALKING BY MYSELF. (J.A. Lane)

CD: Gary Moore "Still Got The Blues"



YOU KNOW I LOVE YOU
YOU KNOW IT'S TRUE

GIVE YOU ALL MY LOVE BABE

WHAT MORE

CAN I DO?

sl

WALKING
LOVE YOU

BY MYSELF I HOPE YOU UNDERSTAND
YES, I LOVE YOU WITH MY HEART AND SOUL

I JUST WANT TO BE YOUR LOVER MAN.
I WOULDN'T MISTREAT YOU FOR MY WEIGHT IN GOLD